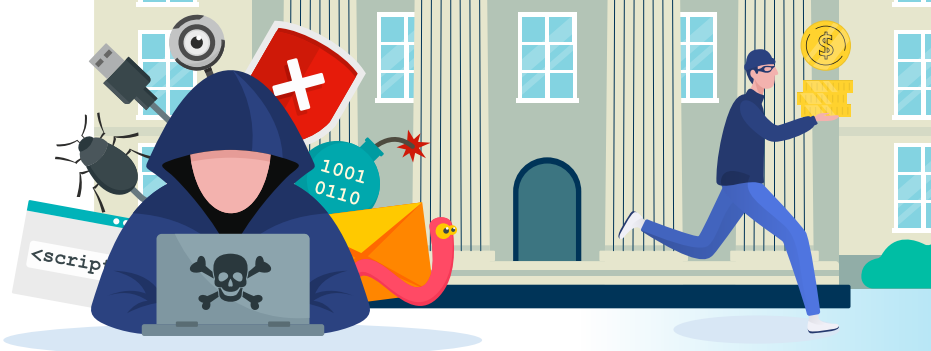


# Higher Education: The Real Costs and Threats of Data Breaches

## THE PROBLEM

### Why is Higher Ed targeted by hackers?

Did you know that the education sector is regarded as the least secure industry with the highest amount of vulnerabilities present?



Higher Education collects and stores massive amounts of data. Students, faculty, alumni, donors, and administration all provide sensitive information that include personal identifiable information (PII), personal health information (PHI) and financial data. As the pandemic ushered in remote learning, an influx of internet-connected devices and new cashless payment across campus, higher ed has become a growing target for cybercriminals.

# \$3.86<sup>M</sup>

The average cost of a data breach for education in 2022 at \$245 per compromised record.<sup>1</sup>



# 1,851

breaches between 2005 and 2021 in higher education.<sup>3</sup>

# 207 days

The number of days it takes to detect a breach and a further 70 days to contain the breach.<sup>2</sup>

# 1,241

incidents in 2022, 282 with confirmed data disclosure.<sup>4</sup>

# \$1.42<sup>M</sup>

Higher education has one of the slowest recovery times following an attack – 40 percent took more than a month to recover with an average remediation cost of \$1.42 million.<sup>5</sup>

1. IBM/Ponemon, Cost of Data Breach Report, 2022 2. IBM/Ponemon 2022 3. Fierce Education 4. Verizon, DBIR, 2022 5. Sophos 2022

## CAUSES/THREATS

Ransomware, DDoS attacks and other threats continue to evolve and target the Higher Education sector.



# 80%



80% of the reported breaches were System Intrusion, Denial of Service attacks or human error in 2022. Ransomware in particular was responsible for 30% of the reported breaches.<sup>1</sup>

# 350%



DDoS attacks against the online resources of educational institutions grew by 350% between January and June 2020.<sup>2</sup>

# 74%



74% of ransomware attacks on Higher Ed institutions succeeded in 2021.<sup>3</sup>

# 64%



64% of higher education organizations had been hit by ransomware attacks in 2021, a significant jump from 44% the year before.<sup>4</sup>

# 48.8%



The State of Ransomware 2022 report documented 64 publicly reported ransomware attacks against the education sector, representing a massive 48.8% increase on 2021 and placing the education sector to first place in 2022 above both government and healthcare.

1. DBIR 2022 2. Cyber Resilience in EDU, SaltyCloud, 2023 3. Inside\_Higher\_Ed - Ransomware Attacks Against Higher Ed Increase 4. Sophos, 2022

## SECURE SOLUTIONS FOR HIGHER EDUCATION

Bluefin specializes in payment and data security solutions to protect colleges and universities. Learn more or contact us at [bluefin.com/industries/education](https://bluefin.com/industries/education)



**Bluefin**<sup>®</sup>  
bluefin.com